

MICROMOTOR NA030G

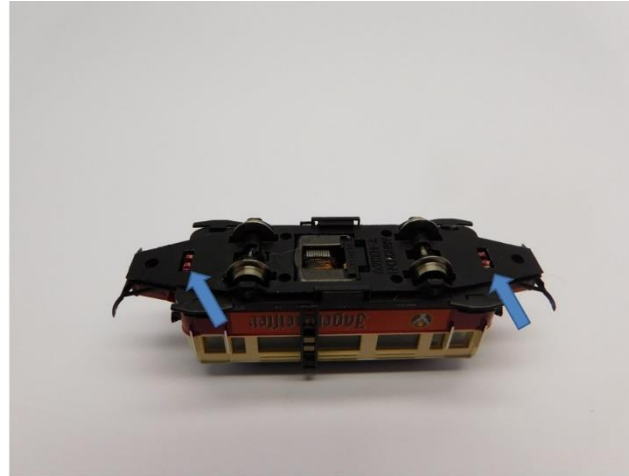
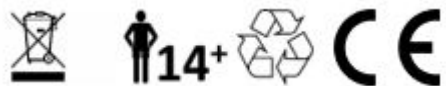


Arnold VT 89.9, VT 133, Schweineschnäuzchen
Glockenankermotor Umbau Spur N
Coreless motor upgrade N gauge
Klokankermotor ombouwset N

Warning! This product is not a toy and is not suitable for children under 14 years contains small parts. This product contains electronic parts so do not throw them in the household waste but hand them in separately. The EU WEEE directive applies.

Achtung! Dieses Produkt ist kein Spielzeug, nicht für Kinder unter 14 Jahren geeignet, enthält Kleinteile. Dieses Produkt enthält elektronische Teile. Werfen Sie diese daher nicht in den Müll, sondern getrennt einsammeln. Es gilt die EU-WEEE-Richtlinie.

Opgelet! Dit product is geen speelgoed, niet geschikt voor kinderen onder de 14 jaar, bevat kleine onderdelen. Dit product bevat elektronische onderdelen, gooi dit daarom niet bij het huisafval maar lever dit apart in. WEEE-Regelgeving van de EU is van toepassing.



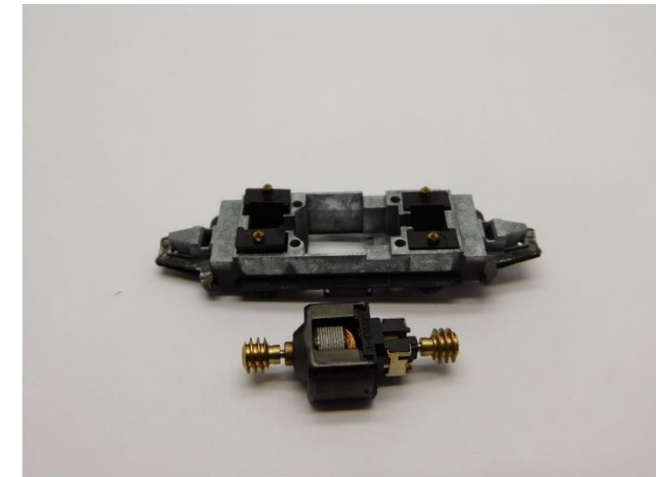
Öffnen Sie die Treibwagen
Open the train
Open de motorwagen



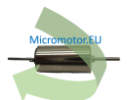
Öffnen Sie die Treibwagen
Open the train
Open de motorwagen

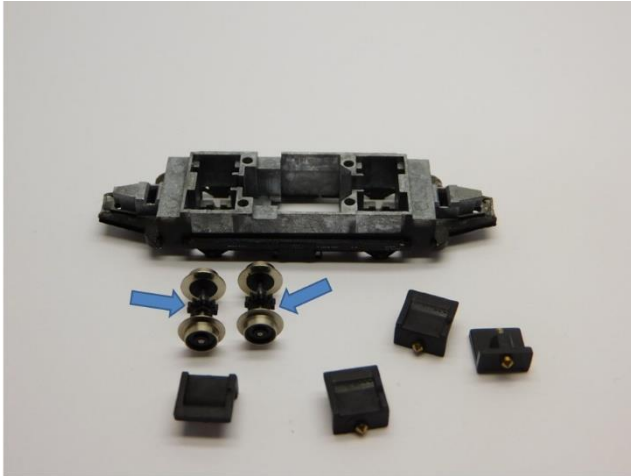


Ausbau alter Motor
Take out the old motor
Demonteer de oude motor

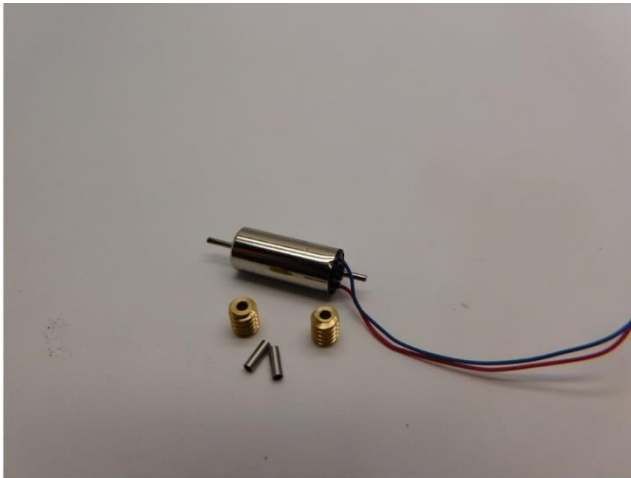


Ausbau alter Motor
Take out the old motor
Demonteer de oude motor





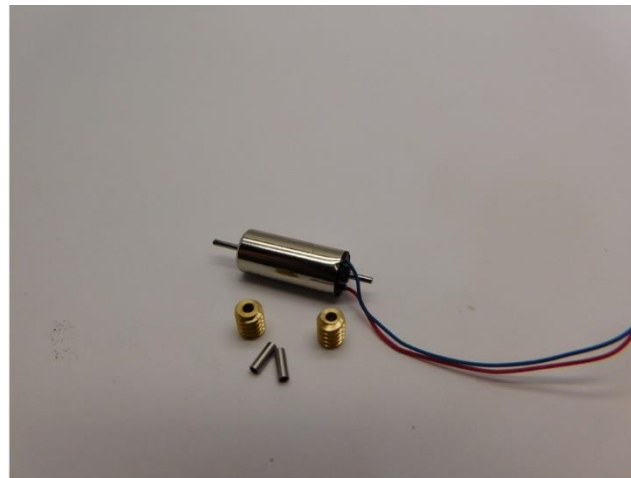
Überprüfen Sie die Zahnräder!
 Check the gears!
 Controleer de tandwielen!



Die Teile des Bausatz
 The parts of the kit
 Onderdelen van de ombouwset



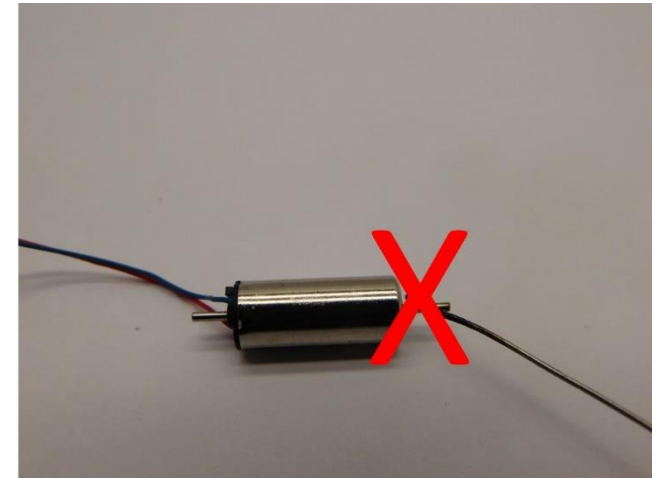
Metallteile werden mit Loctite oder Metal Epoxy Kleber verklebt
 Metal parts are glued with Loctite or metal epoxy glue
 Metalen onderdelen worden gelijmd met Loctite of epoxylijm voor metalen



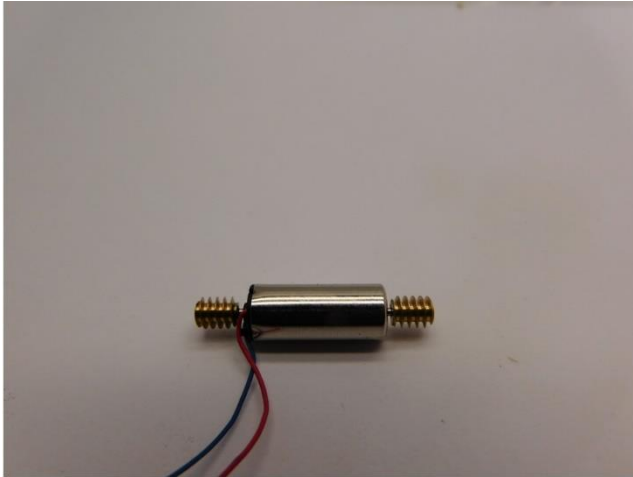
Die Metallteile werden mit Loctite oder Metall Epoxy kleber verklebt
 The metal parts are glued with loctite or metal epoxy glue
 Metalen onderdelen worden gelijmd met Loctite of epoxylijm voor metalen



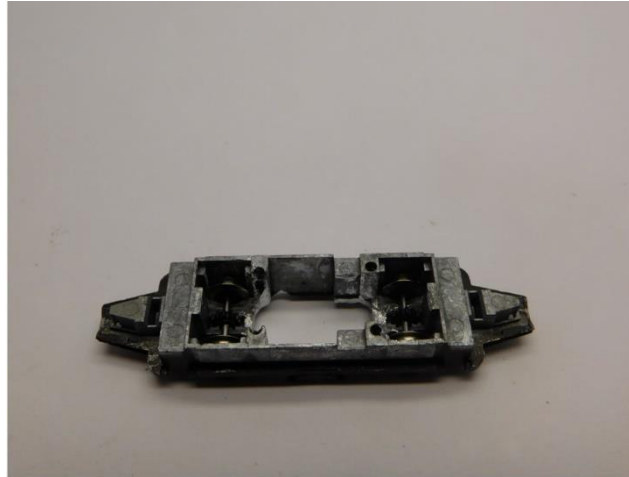
Tragen Sie Klebstoff auf die Innenseite des Teile auf
 Apply glue on the inside of the parts
 Plaats alleen lijm aan de binnenzijde van de onderdelen



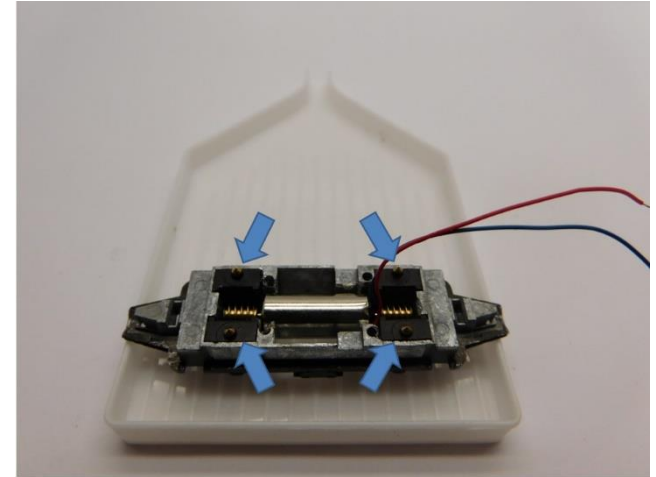
Tragen Sie keinen Kleber auf die Achse auf
 Don't apply glue on the axle
 Plaats geen lijm op de as



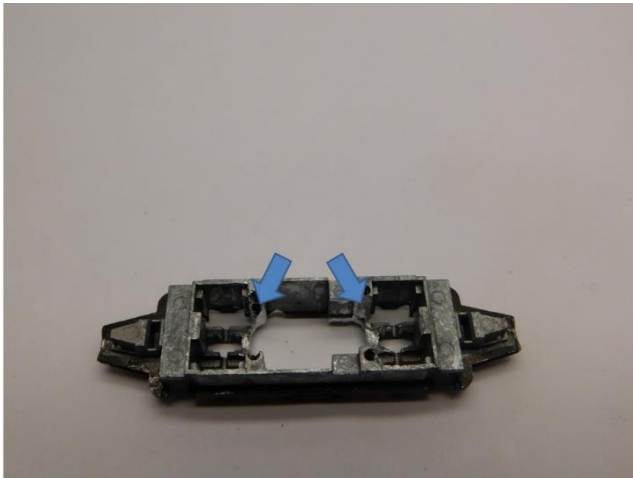
Die Metallteile sind geklebt
The metal parts are glued
De metaaldelen zijn verlijmd



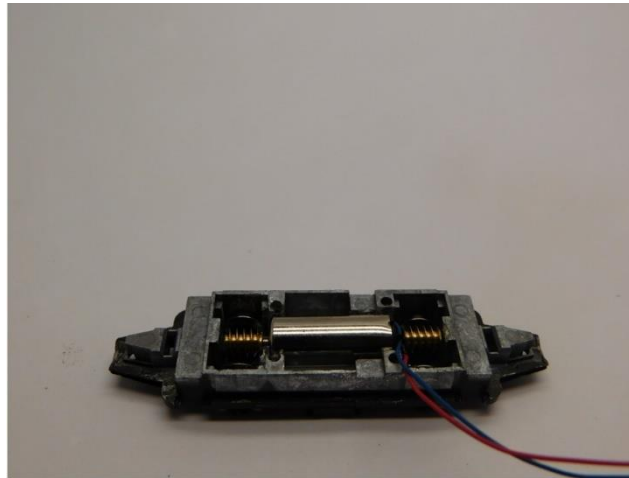
Platzieren die Räder in das Modell
Mount the wheels in the model
Monteer de wielen in het model



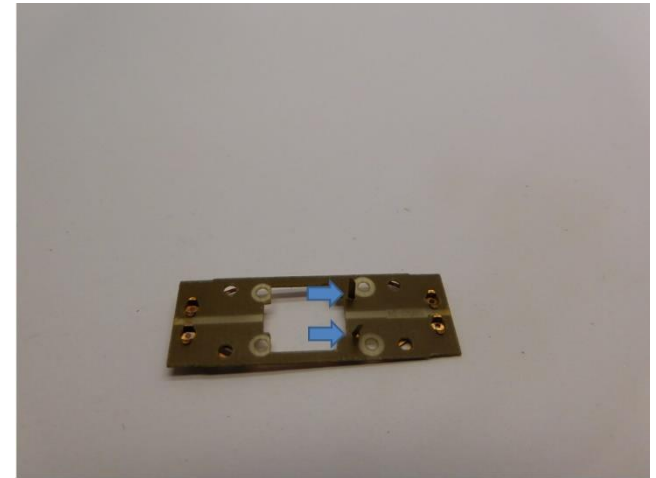
Kontakte platzieren
Mount the contacts
Monteer de contacten



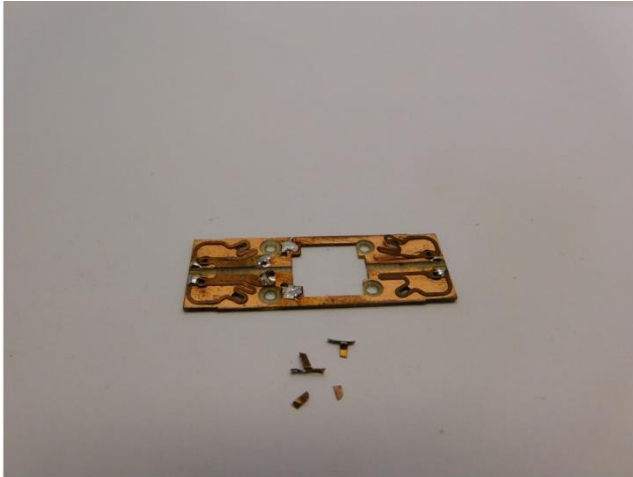
Material muss gefräst werden
Material must be milled
Materiaal moet gefreesd worden



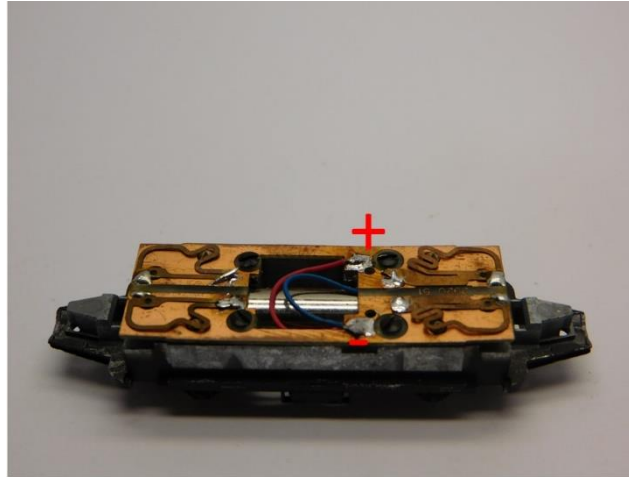
Motor platzieren
Mount motor
Plaats de motor



Alter Motorkontakte entfernen
Remove old motor contacts
Verwijder de oude motorcontacten



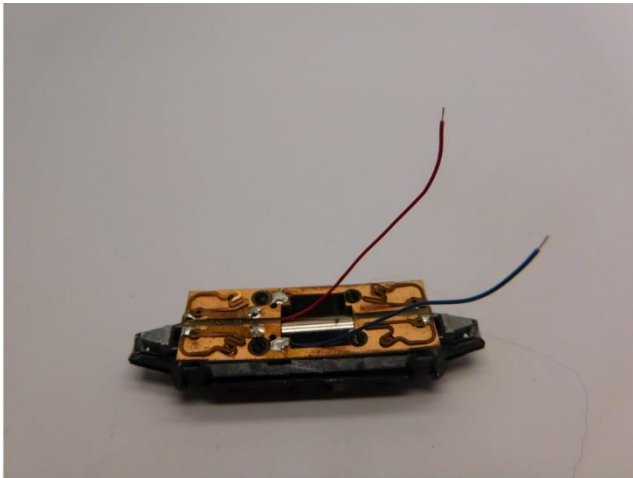
Alter Motorkontakte entfernen
Remove old motor contacts
Verwijder de oude motorcontacten



Löten Sie die Drähte
Solder the wires
Soldeer de draden



Umbau fertig
Upgrade complete
Ombouw gereed



Platine platzieren
Mount the PCB
Plaats de printplaat



Gehäuse platzieren
Mount body
Plaats de kap



Micromotor NA030G